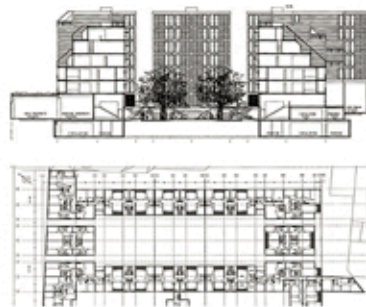


OBRAS REFERENTES

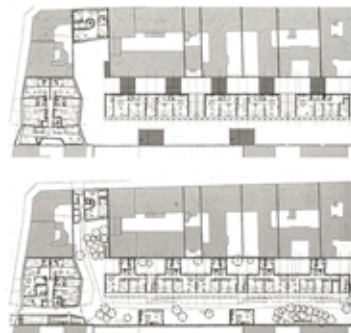
- 01 - Viviendas Malabia 933
Estudio A+I - CABA Argentina 2012



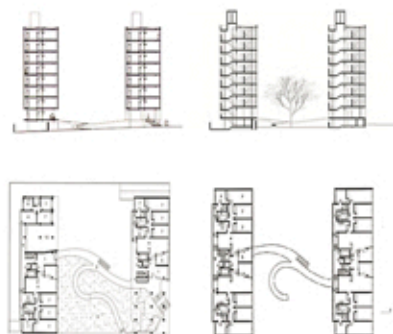
- 02 - Renzo Piano y R. Rogers
Rue De Meaux Housing - 1991



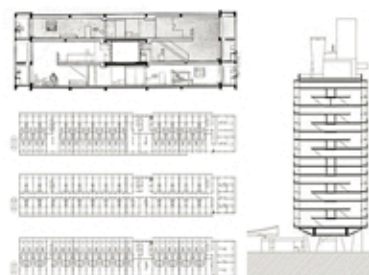
- 03 - Herzog y De Meuron
Rue Des Suisses, Paris Francia - 1996



- 04 - J. B. Vilanova Artigas
Edificio Louveyra. San Pablo, Brasil - 1946

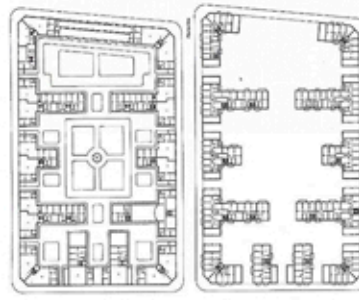


- 05 - Le Corbusier
Unidad de Habitación de Marsella, Francia - 1945

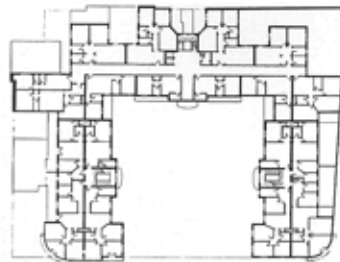


OBRAS REFERENTES

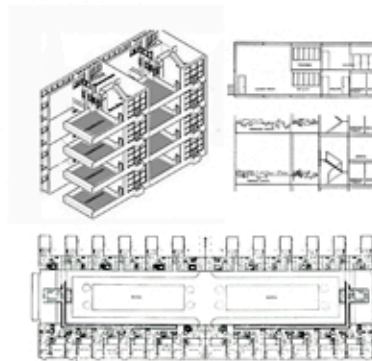
- 06 -F. Bereterbide
Conjunto Los Andes, Chacarita CABA. - 1928



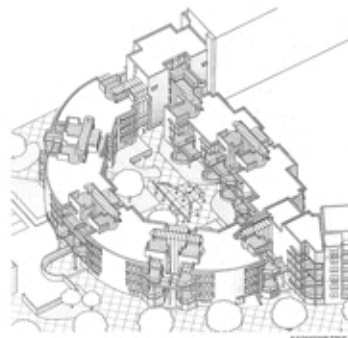
- 07 - Estanislado Pirovano
Casa Colectiva América, San Telmo CABA.
-1921/37



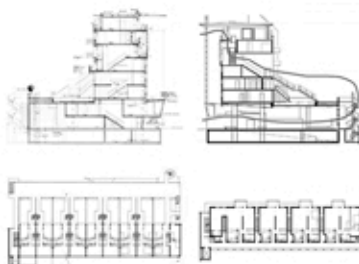
- 08 - Le Corbusier
Inmueble Villa, Paris, Francia. - 1925



- 09 -Herman Hertzberer
Conjunto Lima Housing. IBA Berlin. 1984/86

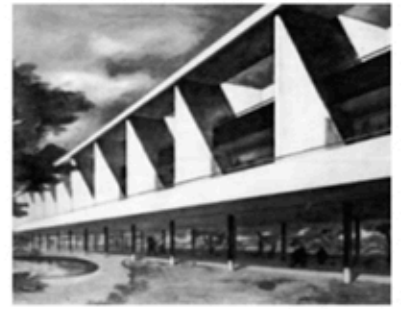


- 10 - OMA
Checkpoint Charlie Apartments, Berlin
- 1980/90

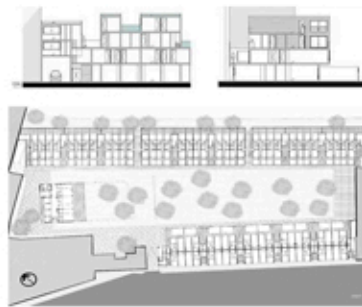


OBRAS REFERENTES

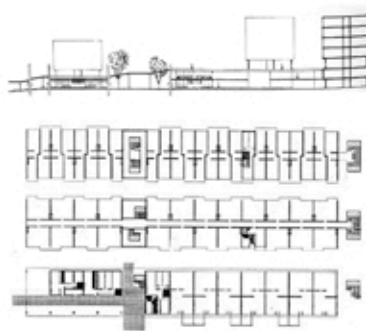
- 11 - Wladimiro Acosta
Viviendas Colectivas Helio I/II/III



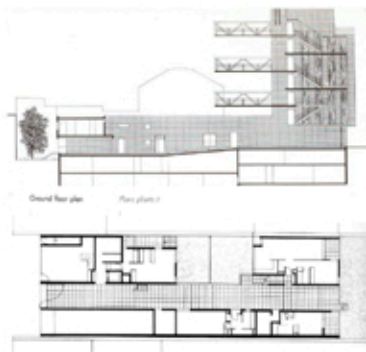
- 12 - Neutelings y Roedijk
Hollainhof, Bélgica. - 1998



- 13 - B.V.C.H. arqs
Unidad Vecinal Portales, Santiago Chile.
-1954/68



- 14 - Phillippe Gazeau
Viv. en XIXe Arrondissement. Paris, Francia.
-1994



- 15 Antonio Bonet
Edificio Terrace Palace, Mar del Plata. - 1957

